

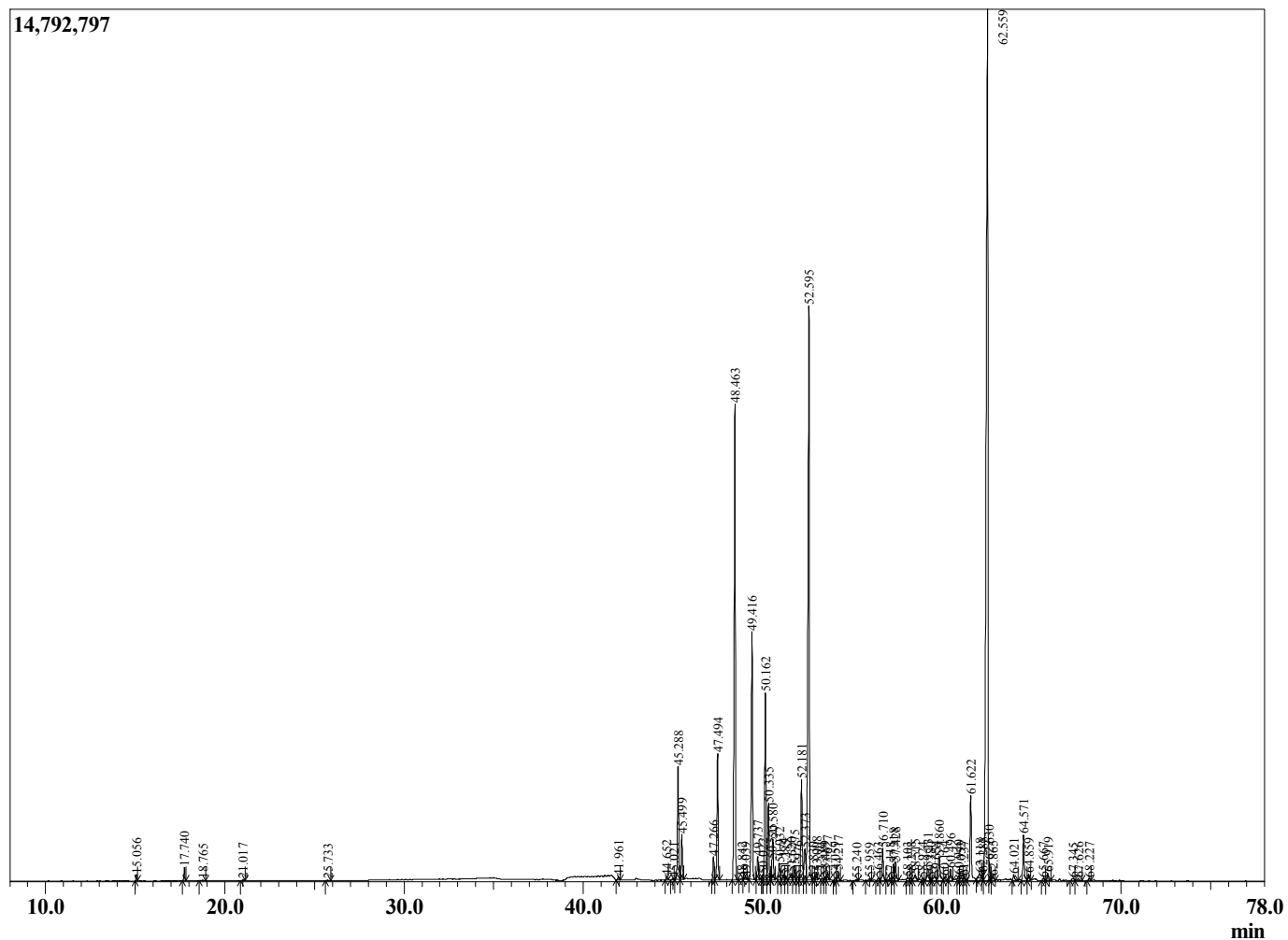
Sample Information

Sample Type : Essential Oil
 Sample Name : Pogostemon cablin

Patchouli Dark Indonesian
 Lot# Ink24-KT
 Country: Indonesia



Chromatogram Pogostemon cablin



R.Time	Name	Area%
15.056	alpha-Pinene	0.10
17.740	beta-Pinene	0.25
18.765	3-Octanol	0.01
21.017	Limonene	0.02
25.733	Linalool	0.02
41.961	delta-Elemene	0.09
44.652	alpha-Copaene	0.09
45.021	cis-beta-Elemene	0.04
45.288	beta-Patchoulene	2.69
45.499	beta-Elemene	1.03
47.266	Cycloseychellene	0.55
47.494	beta-Caryophyllene	2.99
48.463	alpha-Guaiene	12.41
48.842	Unidentified	0.05
49.039	Unidentified	0.05
49.416	Seychellene	6.28
49.737	alpha-Humulene	0.57
50.022	Unidentified	0.12
50.162	alpha-Patchoulene	4.63
50.335	gamma-Patchoulene	1.82
50.525	Patchoulene analog	0.25
50.580	9-epi-Caryophyllene	1.04
50.932	Unidentified	0.43
51.174	gamma-Gurjunene	0.18
51.285	Germacrene D	0.12
51.620	delta-Selinene	0.25
51.775	beta-Selinene	0.37
51.976	Patchoulene analog	0.12
52.181	Aciphyllene	2.70
52.373	Eudesma-2,4(15),11-triene	1.05
52.595	delta-Guaiene	16.38
52.830	Unidentified	0.06
53.008	Unidentified	0.22
53.330	Unidentified	0.07
53.489	delta-Cadinene	0.08
53.627	alpha-Panasinsene	0.21
54.059	Unidentified	0.07
54.217	Unidentified	0.23
55.240	alpha-Elemol	0.04
55.959	Germacrene B	0.05
56.463	Unidentified	0.08
56.710	Norpatchoulenol	0.85
57.118	Unidentified	0.10
57.318	Caryophyllene oxide	0.46
57.428	Unidentified	0.52
58.103	Unidentified	0.14
58.278	Unidentified	0.08
58.515	Unidentified	0.24
58.924	Humulene epoxide II	0.06
59.231	Unidentified	0.51
59.380	Unidentified	0.06
59.654	Unidentified	0.22
59.860	Unidentified	0.88
60.164	Unidentified	0.12
60.496	Unidentified	0.36
60.940	Unidentified	0.15

R.Time	Name	Area%
61.052	Unidentified	0.13
61.237	Unidentified	0.11
61.622	Pogostol	2.88
62.118	Unidentified	0.16
62.288	Unidentified	0.05
62.559	Patchouli alcohol	31.60
62.630	Valerianol	0.26
62.865	Unidentified	0.13
64.021	Rotundone	0.20
64.571	Pogostone	1.22
64.859	Unidentified	0.18
65.667	Unidentified	0.06
65.919	Unidentified	0.18
67.345	Unidentified	0.11
67.626	Unidentified	0.11
68.227	Unidentified	0.08
		100.00